



Warning & Caution

WARNING:
 This product must be used in a correct grounded electrical environment; ground defects can create severe problems to the equipment, the picture quality and even cause danger for the user.

Copyright law and international treaties protect this product, its design and its software. One or several international patents apply to the StarliteHD. Unauthorized reproduction or distribution of this product or its design or its software or any portion of them, may result in severe civil and criminal penalties, and will be prosecuted to the maximum extent possible under the law.

Transvideo uses a specific cable for the StarliteHD. User must be extremely careful with the wiring of custom cables. Using other cables may damage the product.

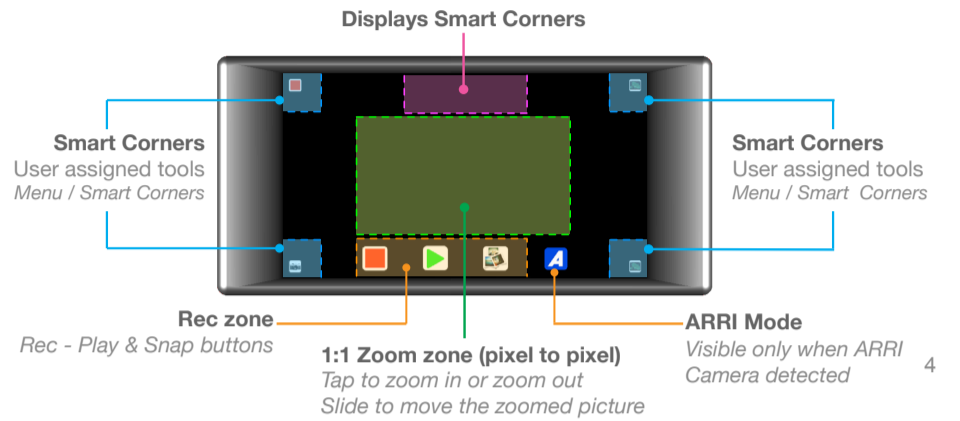
CAUTION:
 Warranty is void as the product is opened. The unit contains electrostatic sensitive devices, which can be damaged or destroyed if you touch them. High voltage is present in the product and there is some risk of electric shock if opened by a non-accredited technician. Standard ESD procedures must be strictly followed during disassembly/re-assembly of the unit.

The user and/or technician assume full responsibility or any risk of bodily injury, death or property damage arising out of the use or disassembly or repair of this equipment. In no event shall Transvideo S.A. or its local representatives be liable to a user, technician or third party for any loss of income or any damage of any kind resulting from the use of or work on the said equipment.

3

Home view - Smart Corners

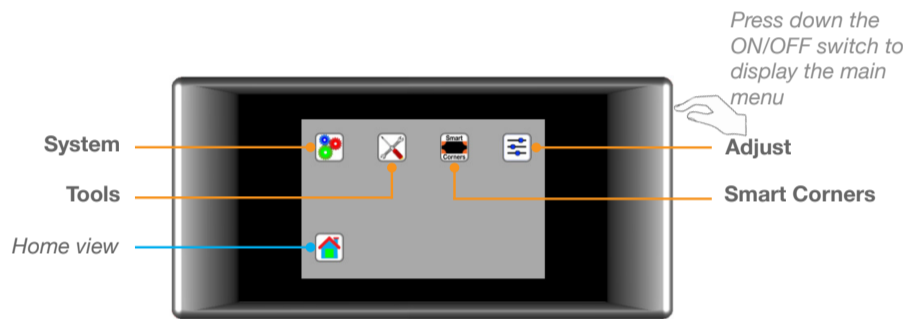
StarliteHD



4

Main menu

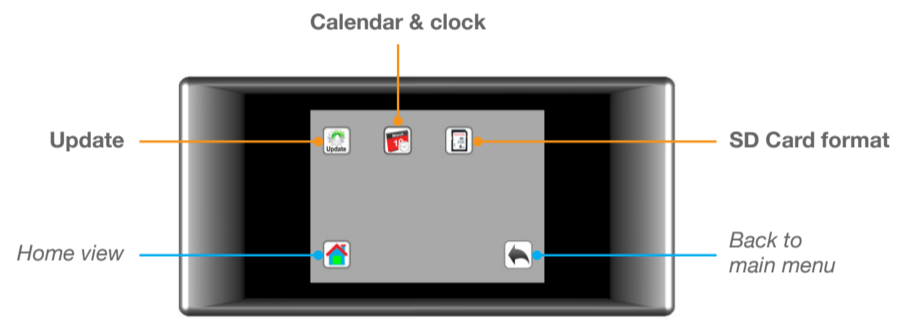
StarliteHD



5

System menu

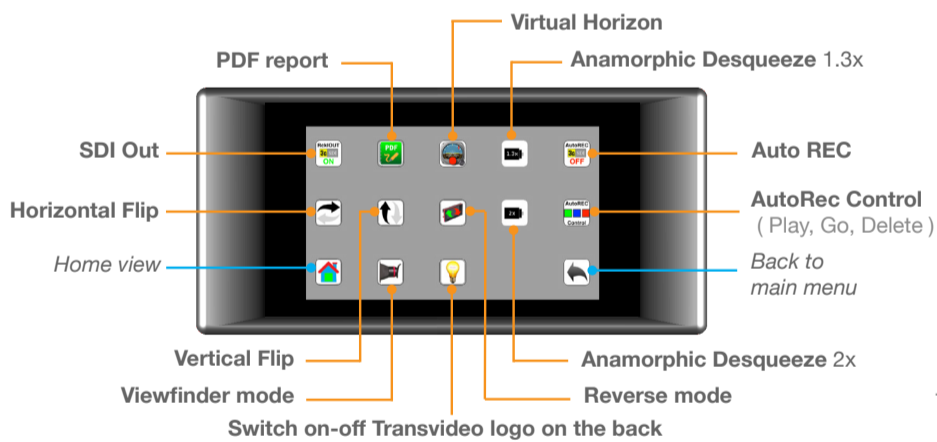
StarliteHD



6

Tools menu

StarliteHD

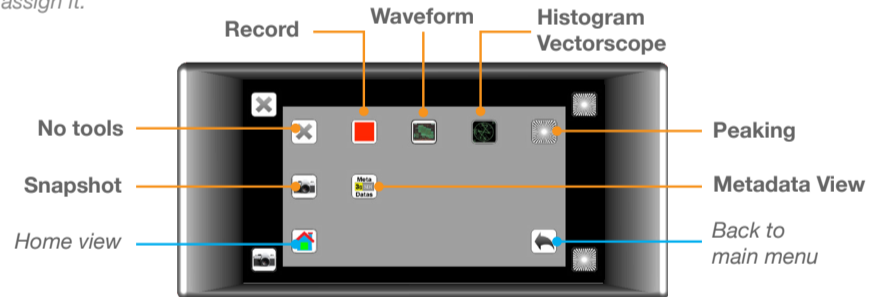


7

Smart corners menu

StarliteHD

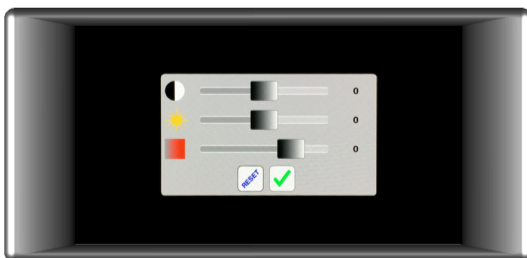
To assign a tool to a smart corner: select a tool, then choose the corner to which you want to assign it.



8

Adjust menu

StarliteHD



Slide to adjust Luminosity, Brightness or Contrast then validate by pushing Push Reset to restore default values.

9

Virtual Horizon

StarliteHD



From the main menu, select Tools icon then activate Virtual Horizon When you see the horizontal bar on the top of the monitor screen, tap on CAL button. The green bubble indicates that your monitor is on level.

10

Metadata

StarliteHD

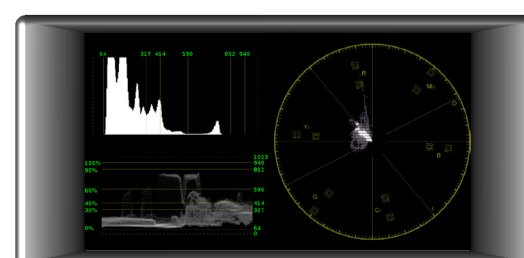


Displays available metadata embedded in the SDI signal. Metadata are camera dependent.

11

Histogram / Waveform / Vectorscope

StarliteHD

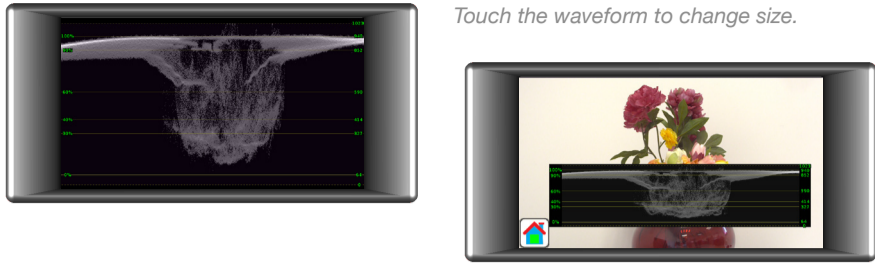


Displays available measurement tools. Histogram & Waveform can be pinned on the picture by simply touching their representation on this screen.

12

▶ **Waveform**

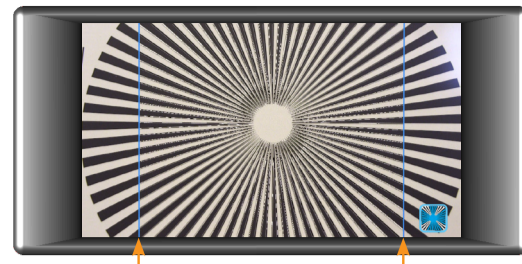
StarliteHD



Waveform can be fullscreen or at the bottom of the picture.

▶ **Peaking**

StarliteHD



The peaking is applied on the picture area located between the two vertical bars.

▶ **Recording / Playing**

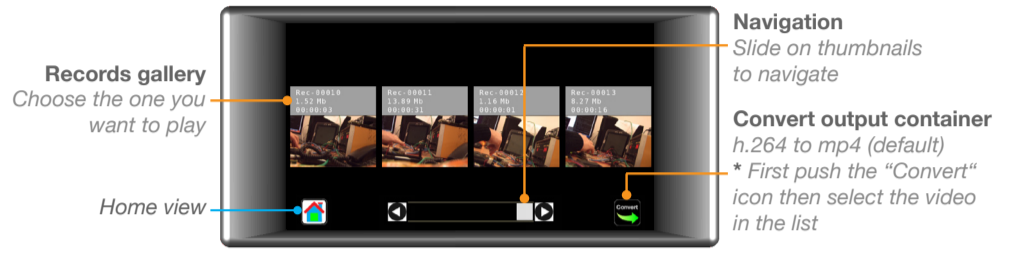
StarliteHD



* All supported standards.

▶ **Recording / Playing / Converting**

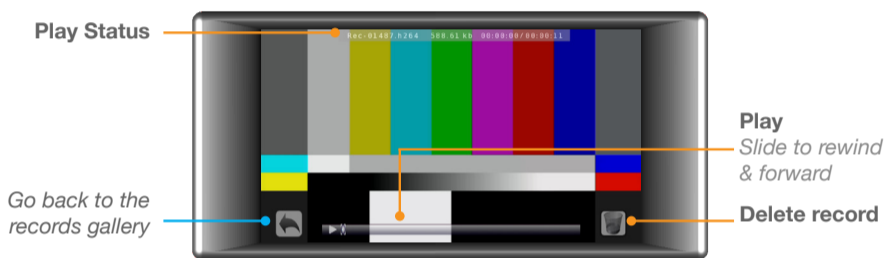
StarliteHD



* Please note that old converted files with the same name will be overridden.

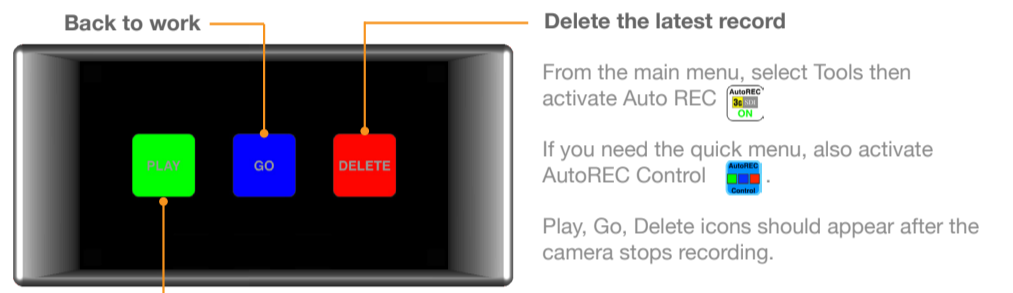
▶ **Recording / Playing**

StarliteHD



▶ **Auto REC**

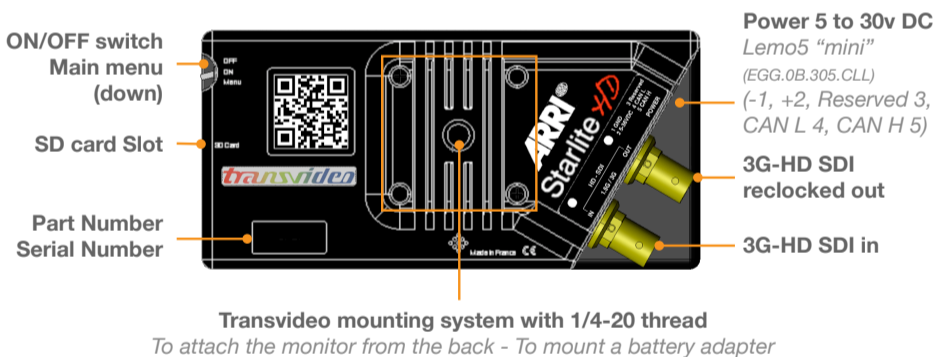
StarliteHD



Auto REC control is only available for build 112 and later. You can read the build version on the monitor startup screen.

▶ **Mechanics & connectors**

StarliteHD



▶ **Technical specifications**

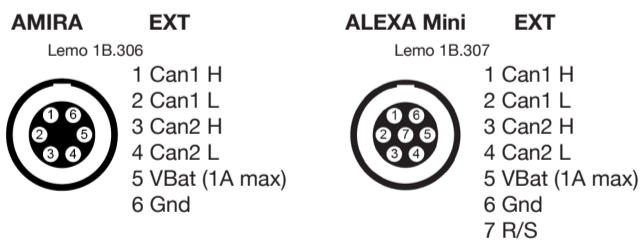
StarliteHD

Video input	1 x 3G / HD / SDI	Color temperature	D56
Video output	1 x 3G / HD / SDI	AvengerLeveler™	yes
Supported Standards	3G: 1080 / 50p, 60p	Power 5 to 30V DC	
	HD: 1080 / 50i, 60i		
	1080 / 24p, 25p, 30p		
	1080 / 24psf, 25psf		
	720 / 25p, 30p, 50p, 60p		
SDI: 525 / 60i	625 / 50i	Power Cons.	6W
Display type & size	AMOLED - 5 inches	SD card slot	yes
Pixels	Picture zone 1280 x 720	Dimensions (w x h x d)	144 x 68 x 27 mm 5,66 x 2,67 x 1,06 inches
Contrast ratio	3400:1	Weight	< 200g / 0.5 lbs
Viewing angle	±80° H & V		
Brightness max	380 Nits		

▶ **ARRI camera connectors Pin-Outs**

StarliteHD

<http://www.transvideo.eu/StarliteHD5-ARRI>



Note: All pin-outs for camera interfaces appear as seen by the user.

▶ **Configuration file**

StarliteHD

You can generate a file which gives :

- Possibility to convert the output container from h.264 to mp4 (default) or mkv.
- Possibility to adjust the compression level and to choose intra mode for coding.
- Possibility to choose a default name for the clips.
- And so on.

Options are set online on our web site, a file is generated and placed manually onto the SD card.

For more information, visit <http://www.transvideo.eu/support-StarliteHD>

▶ **How to update**

StarliteHD

Plug the SD card into your computer. Download and uncompress the latest software release (the downloaded file is in zip format) using your archive utility application. Open the uncompressed folder then copy the file maj.tar.gz and paste it at the root of the SD card. Do not rename the file on the SD card. Plug the SD card into the monitor. Turn ON the monitor then push down the menu button.

Select the Settings icon then choose Update. Validate your choice and wait...

During the update, you can read the following information on the screen.

- Do not disconnect your monitor from the power supply.
- Full system update : may require more than 30 minutes.
- Applicative update in progress.

After a successful update, the monitor displays "Your monitor is up to date". If an error occurs, a report is generated. You can read the online version at <http://www.transvideo.eu/support-StarliteHD>

▶ **Accessories / Cables**

StarliteHD

